



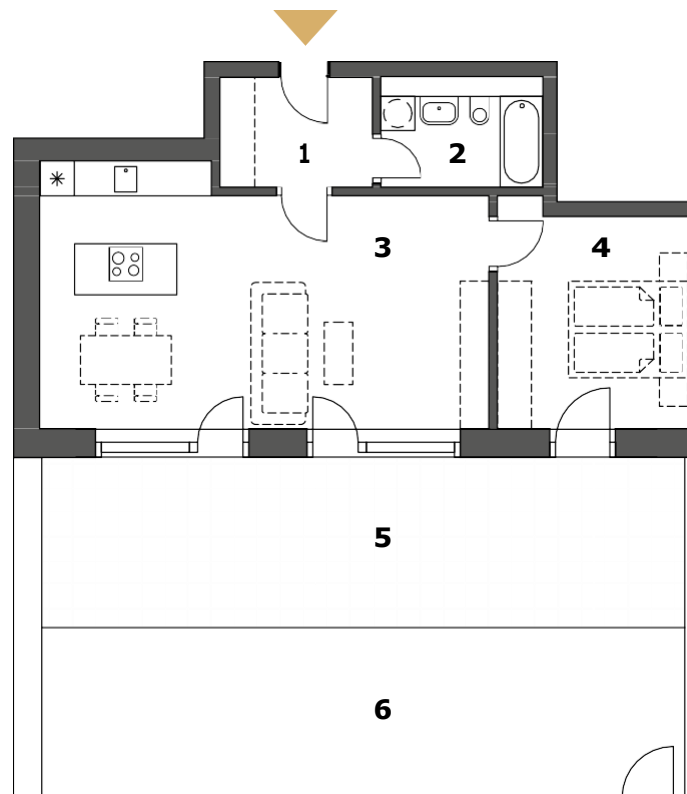
# WECHŮV DVŮR

REZIDENCE



B1.05 | 1F | 2R+Kitchenette [www.wechuvdvur.cz](http://www.wechuvdvur.cz)

1	Anteroom	5.2 m <sup>2</sup>
2	Bathroom + WC	4.6 m <sup>2</sup>
3	Living room	35.5 m <sup>2</sup>
4	Bedroom	13.4 m <sup>2</sup>
<b>Internal usable floor area</b>		<b>58.7 m<sup>2</sup></b>
<b>Total floor area</b>		<b>61.4 m<sup>2</sup></b>
5	Terrace	35.2 m <sup>2</sup>
6	Dooryard	38.5 m <sup>2</sup>



## SELLER

**RS ZVONEK, s.r.o.**

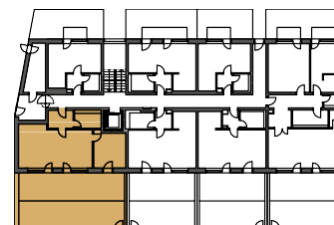
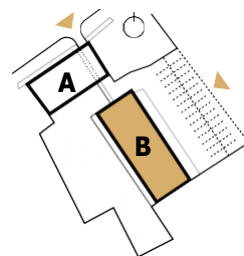
Vejvanovského 384

767 01 Kroměříž

**Veronika Došlíková**

[doslikova@reality-zvonek.cz](mailto:doslikova@reality-zvonek.cz)

+420 603 273 462



The floor plan represents the layout of the apartment. Pictured furniture, built-in closets, kitchenette including appliances and washing machine are not parts of the apartment offer. These items are shown for demonstration only. Total floor area is calculated in accordance with Government Decree No. 366/2013 Coll. All information presented in this document, irrespective of given form of presentation, is non-binding promotional information of general nature only, it cannot be interpreted as an offer for conclusion of a contract, and it cannot be invoked.