



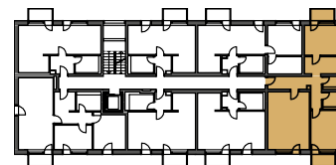
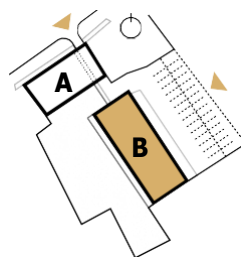
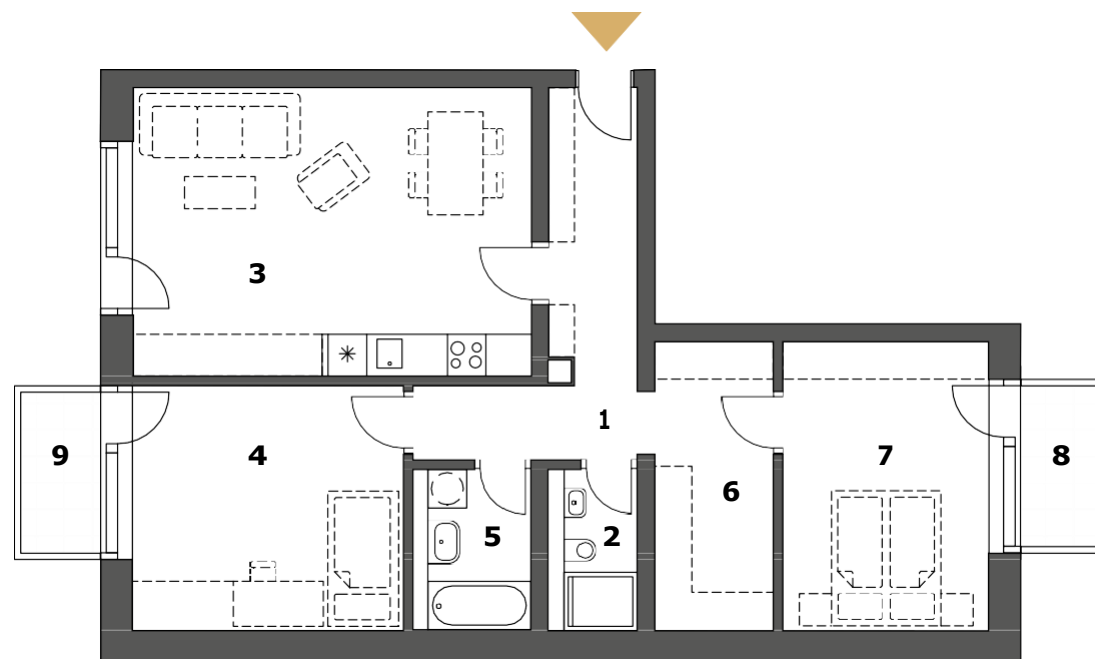
# WECHŮV DVŮR

REZIDENCE



B2.08 | 2 F | 3R+Kitchenette [www.wechuvdvur.cz](http://www.wechuvdvur.cz)

1	Anteroom	10.2 m <sup>2</sup>
2	Bathroom + WC	2.8 m <sup>2</sup>
3	Living room	27.8 m <sup>2</sup>
4	Bedroom 1	16.7 m <sup>2</sup>
5	Bathroom + WC	4.0 m <sup>2</sup>
6	Walk-in closet	8.3 m <sup>2</sup>
7	Bedroom 2	15.1 m <sup>2</sup>
<b>Internal usable floor area</b>		<b>84.9 m<sup>2</sup></b>
<b>Total floor area</b>		<b>91.8 m<sup>2</sup></b>
8	Balcony 1	3.1 m <sup>2</sup>
9	Balcony 2	3.1 m <sup>2</sup>



## SELLER

**RS ZVONEK, s.r.o.**

Vejvanovského 384

767 01 Kroměříž

**Veronika Došílková**

[doslkova@reality-zvonek.cz](mailto:doslkova@reality-zvonek.cz)

+420 603 273 462

The floor plan represents the layout of the apartment. Pictured furniture, built-in closets, kitchenette including appliances and washing machine are not parts of the apartment offer. These items are shown for demonstration only. Total floor area is calculated in accordance with Government Decree No. 366/2013 Coll. All information presented in this document, irrespective of given form of presentation, is non-binding promotional information of general nature only, it cannot be interpreted as an offer for conclusion of a contract, and it cannot be invoked.