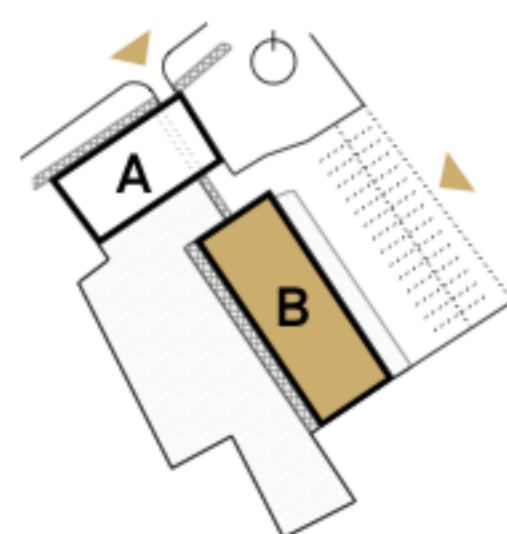
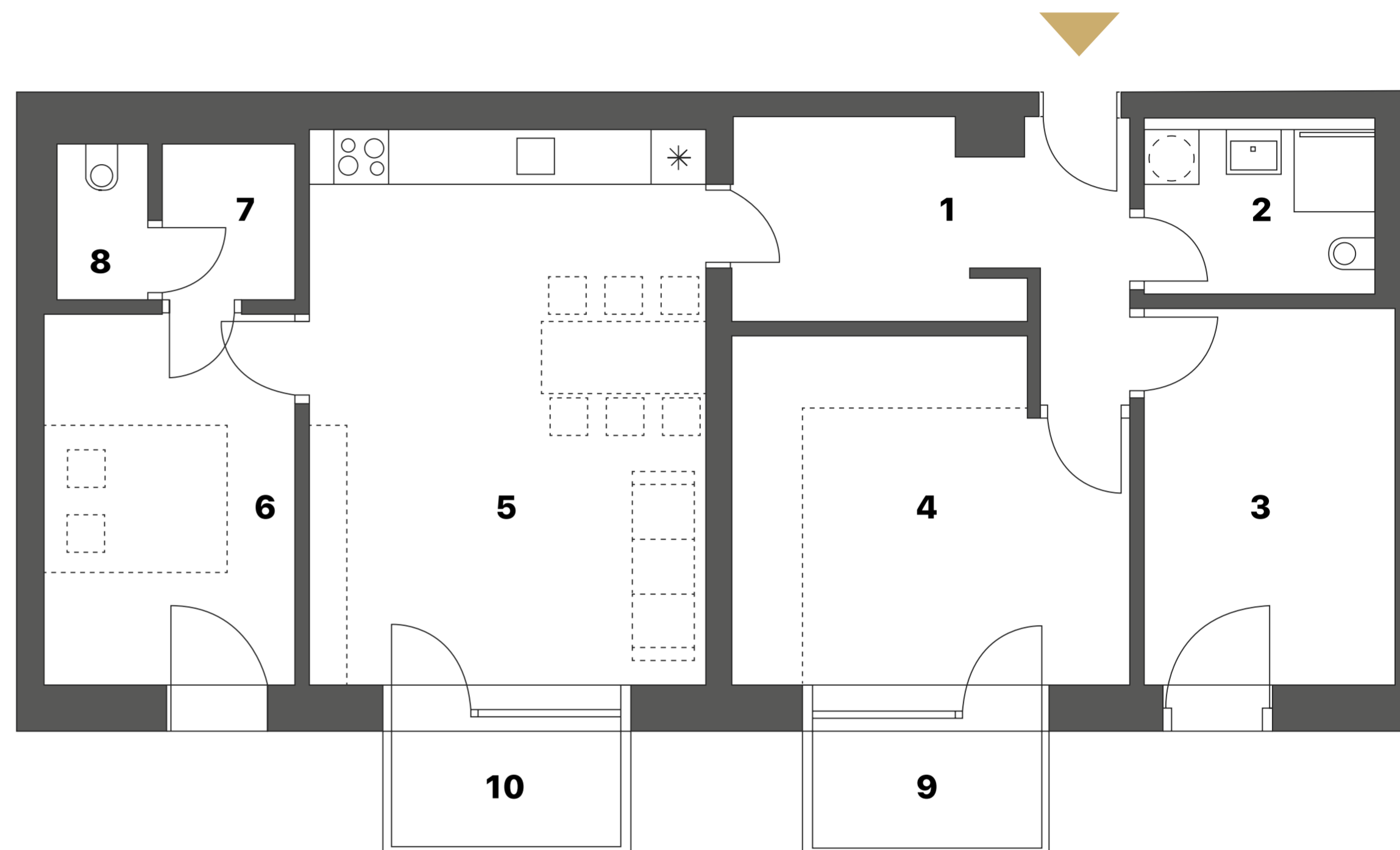


**B2.05 | 2. F | 4R+Kitchenette** [www.wechuvdvur.cz](http://www.wechuvdvur.cz)

1	Entrance hall with cloakroom	9,7 m <sup>2</sup>
2	Bathroom + WC	4,5 m <sup>2</sup>
3	Room	11,5 m <sup>2</sup>
4	Room	16,1 m <sup>2</sup>
5	Living room	26,7 m <sup>2</sup>
6	Room	11,3 m <sup>2</sup>
7	Closet	2,5 m <sup>2</sup>
8	WC	1,7 m <sup>2</sup>
<b>Internal usable</b>		<b>84 m<sup>2</sup></b>
<b>Total floor area</b>		<b>90,2 m<sup>2</sup></b>
9	Balcony	3,1 m <sup>2</sup>
10	Balcony	3,1 m <sup>2</sup>



**SELLER**

**RS ZVONEK, s.r.o.**  
Vejvanovského 384  
767 01 Kroměříž

**Veronika Došílková**  
doslikova@reality-zvonek.cz  
+420 603 273 462